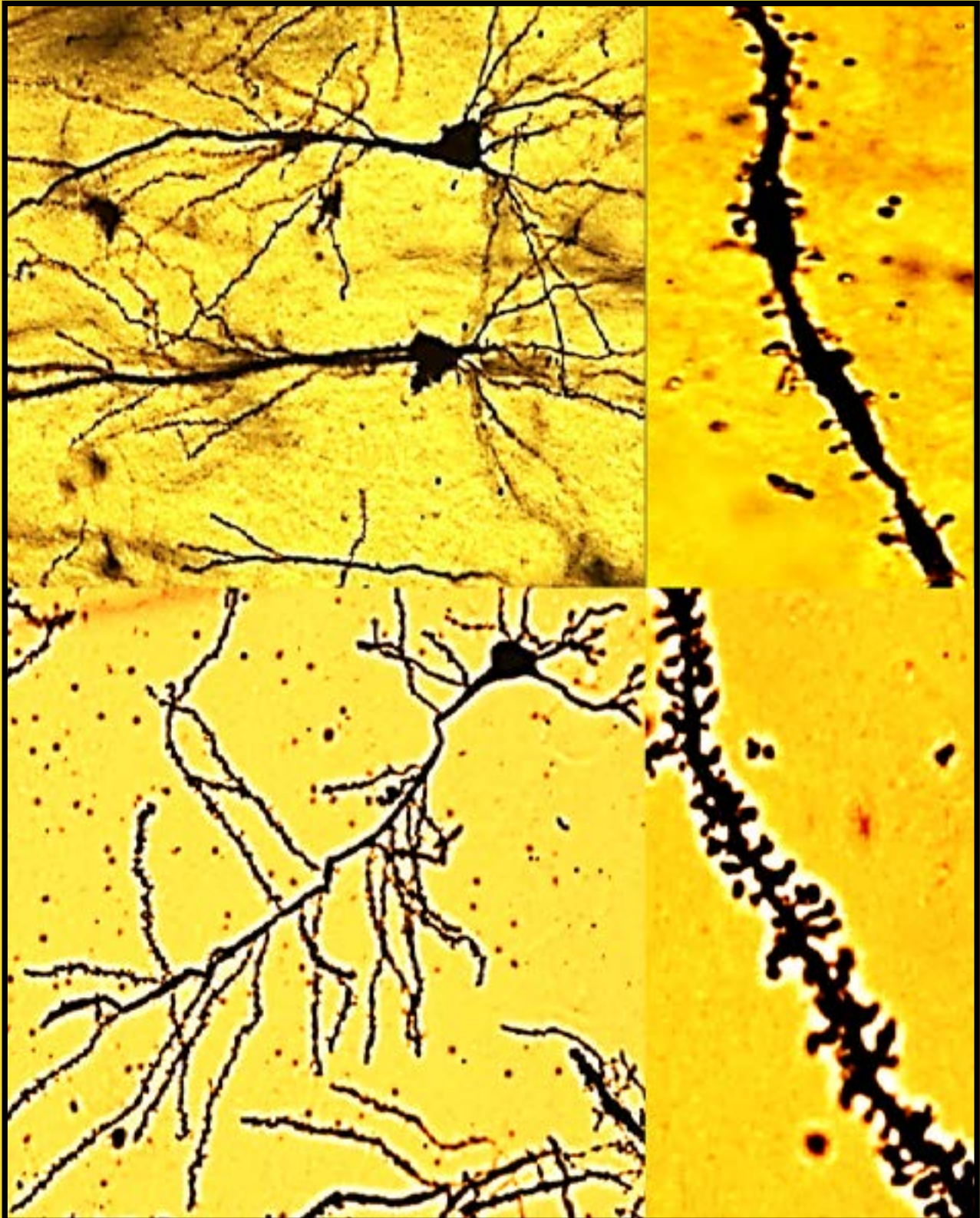


FIELD NOTES



Left: Hippocampal pyramidal neurons from control (bottom) and Alzheimer's mouse brain tissue (top)
Right: Dendritic spines from control (top) and Alzheimer's disease mouse brain tissue (bottom).



Gary L. Dunbar, Ph.D.
FNI Executive Director



Martha Ann Joseph
Chair, FNI Board



E. Malcolm Field, MD
FNI Medical Director

Why contribute to FNI?

I believe the major reason that people generously donate to FNI is that they believe deeply in the vision of Dr. Field and the mission of the Institute: “The mission of the Field Neurosciences Institute is the prevention, early diagnosis, care and cure of neurological diseases, disorders and injuries. This mission symbolizes a promise for the future for neurological patients and their families. A promise to keep the light of progress burning bright in the battle against neurological disease, disorders and injuries. A promise that in touching the lives of our many patients, we will strive to enhance their lifetimes in our never-ending quest for answers to conquer neurological illness.”

Dr. Field envisioned a foundation for FNI that was supported equally by each leg of a three-legged stool: Research, Education, and Clinical Care. Over the past 25 years, the Chair of our Board of Directors, Martha Ann Joseph, has worked tirelessly in her highly successful efforts to ensure that each of our fundraisers advanced the mission of FNI. Over the years, our fundraisers have provided critical support for our efforts in research, education, and clinical care. Funds from previous fundraisers have been used to: (1) purchase specialized sporting equipment for those with spinal cord injuries; (2) obtain an ISO-C3D CT System for 3-D intra-operative imaging; (3) support stroke screening programs; (4) sustain our lead poisoning prevention program; (5) elevate our injury prevention programs, including, ThinkFirst, Buckle Your Brain, Caught Being Safe, and Safe Steps, to national recognition; (6) sponsor two nursing scholarships at SVSU; (7) train physicians on the use of the new CyberKnife; (8) purchase a Sprinter Van, used for health screenings, as well of for education and prevention programs; (9) procure specialized surgical equipment, such as the Apollo system, to help in neurovascular intervention of stroke patients; (10) provide student fellowships for area scholars who seek training in the neurosciences; (11) acquire a flow cytometer, a cell-counting machine used for researching therapeutic use of adult stem cells; (12) obtain a spectrophotometer, for identifying proteins in brain tissue for therapeutic research purposes; (13) acquire an IVIS (in vivo imaging system), which allows researchers to track transplanted stem cells or to determine how treatments might be shrinking a tumor in a rodent model of glioblastoma; (14) purchase a driving simulator to help brain-damaged patients and, when possible, regain their ability to drive safely; and (15) obtain access to TRAZER units, used in our concussion clinic to assess functioning of athletes from baseline and, when needed, following a concussion.

Although our educational and clinical care programs are more visible because they have a more immediate and direct impact on people, our research program has also flourished because of the generous donations provided by FNI supporters. During the past 10 years the quantity and quality of FNI-sponsored research has increased dramatically. The acquisition of laboratory equipment, such as the flow cytometer, spectrophotometer, and in vivo imaging system has led to a steep, upward trajectory in our research productivity as measured by the number of peer-reviewed, published research articles in high quality journals (with a concomitant increase in number

of citations, leading to an evaluation of overall impact that rates FNI research in the top 5% world-wide). Our work in showing that genetically altered adult stem cells can reduce neuropathological and functional deficits in rodent models of disease and brain injury has given FNI international recognition. Recent work in genetic therapy using dendrimers to deliver the SOX2 gene to treat stroke (the basis for a successful grant from the American Heart Association) and studies indicating the efficacy of using the CRISPR-Cas9 gene editing tool for reducing the production of the mutated protein in Huntington’s disease are two more examples of highly recognized FNI research. The more recent work with novel pharmacological treatments, such as using GM1 ganglioside and boric acid compounds, as well as use of nutraceuticals, including curcumin and a tart cherry extract compound, for treating neurodegenerative diseases is also gaining international acclaim.

The goal for this year’s FNI fundraiser is to purchase a gene sequencer, which will not only enhance our recent work in therapeutic research, but will also provide new avenues for expanding FNI’s educational and clinical care components, supporting all three legs of FNI’s mission.

It is my fervent hope that FNI will continue to be on the cutting-edge in research, education, and clinical care. Our efforts have gained international recognition, as we have effectively utilized recently acquired research equipment from our fundraising efforts to show how genetically altered stem cells can be used to treat CNS dysfunction, how nanoparticles can be used to efficiently deliver therapeutics to the brain, how gene editing tools can reduce the production of deleterious proteins in our cells, and how new therapeutic strategies can help shrink tumors and reduce neuropathology in a plethora of brain diseases. Your contributions have made an enormous difference in our efforts to help conquer the devastating CNS disorders that plague millions of people. I want to thank you for your generous support of our mission at FNI and to share with you my optimism that, together, we will eventually achieve Dr. Field’s noble vision of providing relief to the millions of people suffering from CNS dysfunction.



What is a gene sequencer and how might it be used by FNI?

Since the human genome project successfully mapped the nearly 20,000 protein-producing genes that we all carry in each of our cells, there has been a massive surge in utilizing this new information for developing better ways to diagnose and treat all sorts of diseases, including neurodegenerative diseases. The DNA that makes up each of these genes can be identified by a gene sequencing machine. Such machines are used by commercial vendors, such as “23andme”, which can map your personal DNA and trace it to distant ancestors. They also can give you clues as to whether you have genes associated with several medical conditions, such as cancer, Huntington’s disease, Parkinson’s disease, and Alzheimer’s disease, all disorders currently being studied by FNI researchers. As such, gene sequencers can be powerful tools that not only provide information about your past ancestry, but gives you clues as to what might bode ahead for you in the future.

The acquisition of a gene sequencer will allow FNI to integrate the three pillars of its mission by allowing its researchers to contribute to new ways to diagnose and treat diseases in the context of specific genetic profiles, which in turn will help inform outreach and educational specialists to provide critical information which will help guide decisions and directions for those who are concerned about their medical future, which, along with knowledge acquired from research, will help clinicians provide state-of-the art personalized medicine that is specifically tailored to the individual needs of each patient. In short, the acquisition of a gene sequencer will ensure that FNI remains a leader in research, education, and clinical care of neurological disorders.

Field of Hope 2017

FNI's annual fundraiser was held on Friday, September 29th at the Temple Theatre. This past year's event featured multi-Grammy-Award-Winning singer, Ronnie Milsap. Proceeds went to obtain a new Flow Probe, a life-saving surgical instrument to help FNI neurosurgeons monitor blood flow during brain surgery, and a state-of-the-art Nanodrop spectrophotometer, which allows FNI researchers to measure minute levels of DNA and brain molecules in their studies to discover new treatments for stroke, Alzheimer's disease, and other neurological disorders.



FNI Research Highlights

Effects of solid lipid Curcumin on autophagy mechanism in glioblastoma

A promising line of therapy involves the use of curcumin, a natural polyphenol with proven anti-cancer properties. However, its clinical utility for treating brain cancer is hampered by limitations of solubility and stability in body fluids, as well as difficulties in crossing the blood-brain barrier. However, the use of a novel, solid lipid curcumin nanoparticle can readily cross the blood-brain barrier and kill more cultured glioblastoma multiforme cells.

Neuroprotective effects of GM1 ganglioside in an in vitro model of Huntington's disease

In the present study, we are investigating the neuroprotective effects of GM1 extracted from bovine or ovine on neuronal stem cells derived from brain tissue of patients who had Huntington's disease. This study is being initiated at the FNI lab in Saginaw, while the animal testing is being conducted in the FNI lab at CMU.

Neuroprotective effects of curcumin in mouse model of Alzheimer's disease

Neuroinflammation and presence of amyloid beta protein are the key pathologies in Alzheimer's diseases (AD). As a potent anti-amyloid and anti-inflammatory natural polyphenol, curcumin (Cur), showed promising results in AD therapy. In the FNI lab in Saginaw and at SVSU, FNI researchers are comparing amyloid beta protein inhibition and anti-inflammatory responses of Cur and or SLCP in vitro and in vivo, respectively.

Neuroprotective role of solid lipid curcumin particles in mouse models (YAC128 and R6/2) of Huntington's disease

In this study, we are comparing the dendritic arborization and dendritic spine morphology in different brain areas of the YAC128 and R6/2 animal models of HD after treatment with solid lipid curcumin particles (SLCPs). This study will help us to understand whether SLCPs can prevent or delay neurodegeneration by altering dendritic arborization in mouse models of HD, and will provide a potentially new therapeutic strategy for treating HD. This project is underway at the FNI labs in Saginaw and CMU.

Interactions of different derivatives of turmeric extract with amyloid beta protein: a molecular docking and in vitro studies

The present study was designed to screen the comparative anti-amyloid capabilities of turmeric compounds with the aid of molecular docking simulation methodology and with some in vitro experimental evidence. This study is a collaborative project with Dr. Leela Raksih at CMU.

Role of molecular chaperones and autophagy mechanism in mouse model of traumatic brain injury after transplantation of mesenchymal stem cells overexpressed with IL10

In this study, we are examining whether the treatment of adult stem cells engineered to overexpress IL-10, will reduce the inflammatory response and protect the neurons by regulating the molecular chaperones and autophagy mechanisms following a contusion to the medial frontal cortex (MFC) in rats. This project is in the final stages of analyses at the FNI lab at CMU.

Effects of boronic acid for treating memory deficits and reducing senile plaques and neurofibrillary tangles in a mouse model of Alzheimer's disease.

This project is underway at SVSU and is in collaboration with Drs. Denise Flaherty and Joseph Larkin

from Eckerd College in St. Petersburg, Florida. This compound was shown to be effective in the C. Elegans, as it reduced plaque formation and paralysis in this worm model of Alzheimer's disease. The proposed project will test to see if these effects can generalize to a mouse model of Alzheimer's disease.

Effects of dendrimer-delivered SOX2 gene for reducing stroke-induced behavioral deficits in rats.

This project is funded by a \$150,000 grant from the American Heart Association and will explore the efficacy of injecting SOX2-gene-carrying dendrimers in transforming stroke induced astrocytes into neurons as a potential cell replacement therapy within the penumbra of an infarct induced by blockage of the middle-cerebral artery. This project is being conducted with Dr. Julien Rossignol at the FNI lab at CMU.

Comparative morphological studies of different brain areas in mouse models of Alzheimer's disease and Huntington's disease (YAC128 and R6/2)

In this project, we will investigate the morphological changes in different brain parts in mouse models of Alzheimer's and Huntington's diseases. The project will involve work at the FNI labs at CMU and Saginaw and the Brain Research Lab at SVSU.

Congratulations to Dr. Panchanan Maiti, 2018 RUBY Award Winner

St. Mary's of Michigan Field Neurosciences Institute congratulates RUBY (Recognizing the Upward, Bright and Young) Award Winner Dr. Panchanan Maiti, who is dedicated to producing insightful and innovative research into new therapies for neurodegenerative diseases and other brain disorders.

Dr. Maiti's contributions to the biomedical sciences have been extensive and tremendously impactful. His work is instrumental in developing new treatment approaches for Alzheimer's disease, brain cancer, and other brain disorders.

Below: top left to right: Eva Zazo, Sue Zazo, Panchanan Maiti, Dr. E. Malcolm Field, Dr. Debasish Mridha
bottom left Mary Kunz, Martha Ann Joseph



**Field Neurosciences Institute
proudly presents**

**Friday, September 21, 2018
8:00 P. M.
Temple Theatre
203 North Washington
Saginaw, Michigan
Bountiful Buffet
from 5:30 to 7:30 P. M.**



**The Phat Pack
Four Broadway Stars**

Sponsorship Opportunities

- 20 Buffet/Show tickets \$15,000*
- 18 Buffet/Show tickets \$10,000*
- 16 Buffet/Show tickets \$7,500*
- 14 Buffet/Show tickets \$5,000*
- 12 Buffet/Show tickets \$2,500*
- 10 Buffet/Show tickets \$1,500
- 4 Buffet/Show tickets \$600
- 2 Buffet/Show tickets \$300
- 1 Buffet/Show ticket \$125

*Your name will be displayed on the screen before the show and during intermission.
All sponsorships received by September 7 will be acknowledged in the Souvenir Program.

Depending on their location, show-only tickets will be \$40, \$30 and \$20 and will be on sale at the Temple Theatre Box Office.

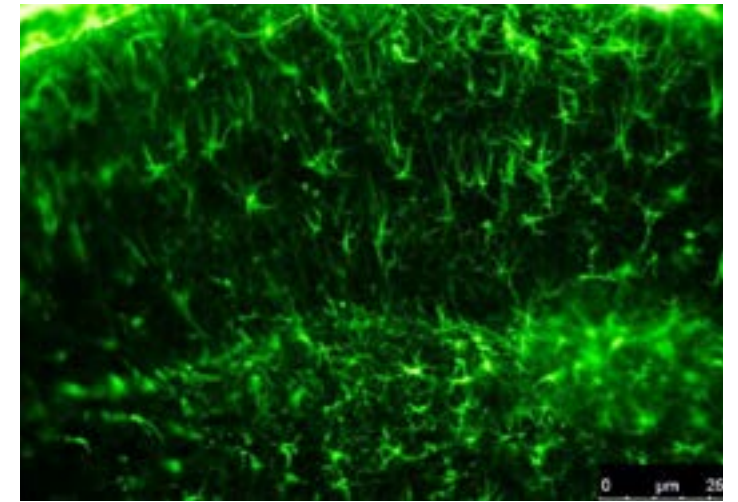


Proceeds from Field of Hope Featuring The Phat Pack will go toward the purchase of a new gene sequencer, which will help put FNI at the forefront of research and clinical use of pharmacogenetics, the ability to tailor modern medicine to an individual's genetic profile.

Call FNI at 989-497-3117 for sponsorships or the Temple Theatre at 989-754-7469 for show-only tickets

**The Surreal Brain: A Collaboration of The Field Neuroscience Institute
and Saginaw Arts Museum**

Join us for the opening of "The Surreal Brain: A Collaboration with the Field Neuroscience Institute and the Saginaw Arts Museum. This exhibition blends science and art by taking a molecular look into brain functionality, disease and decay. They will be exhibiting various brain images taken by FNI scientists, Panchanan Maiti and Swathi Suresh. On September 19th, from 6:00pm - 8:00pm, there will be a brief lecture on their research as well an interactive demonstration using a dissecting microscope with slides of brains sections so that visitors can observe the scientific process, first-hand. The exhibit runs from September 7th, 2018 to December 8th, 2018.



2018 Summer Lab Volunteers

FNI hosted 16 student volunteers in the Saginaw lab this summer. Jamie Lundberg attended the lab sessions during her summer SVSU internship with FNI and offers the following insights on the program:

"I have had the privilege of joining the summer lab volunteer crew to work with Panchanan Maiti, PhD and Gary Dunbar, PhD on different projects a couple days a week for a couple hours at a time. This has provided me with a stronger knowledge base on neuroanatomy at the cellular level, different techniques used to isolate and view proteins in DNA associated with memory loss in the brains of Alzheimer's mice, such as gel electrophoresis and Western Blot, identified plaques by cutting and staining brain tissue from Alzheimer's mice, as well as getting familiar with basic lab techniques, such as cell culture, pipetting, measurement conversions, microscopy, and asking questions."



"Panchanan and Gary are two of the most hard-working dedicated researchers in the field that I know. They are filled with knowledge and a passion for treating neurological diseases that radiates through student volunteers. This is an excellent opportunity to get involved in research and gain hands-on experience in an emerging world leader clinical-based neuroscience research laboratory. It has greatly expanded my knowledge of neuroscience as well as my appreciation for the field and passion for those affected by disease."

Back row from left: Ali Bourcier-Schultz (SVSU), Andrew Waack (MSU), Zackary Bowers (CMU), Bennett Dwan (MSU), Jarod Morse (SVSU)
Middle from left: Elizabeth Bierlein (Alma College), Jamie Lundberg (SVSU), Jessica Peterson (SVSU), Meghana Mulpuri (Heritage High School), Nora Fettinger (CMU)
Front: Gary Dunbar, PhD, Panchanan Maiti, PhD

Injury Prevention

ThinkFirst for Kids and Teens

We are happy to report that during the 2017-2018 school year we have educated over 5,000 students and have distributed free helmets to over 3,500 children.

Caught Being Safe: 90,000 coupons (an increase of 30,000 coupons from previous years) have been distributed around the state, now including marine patrol officers and Coast Guard stations to reward children using safety around water as well as on bicycles. As always, there has been a lot of positive responses and the program is VERY well received by all the uniformed personnel, as well as from the children receiving the coupons. Coast Guard and Marine Patrol officers are loving the extra incentive to help kids stay safe. This year we have also added South East Michgian police, fire, ambulance and state parks.



Caught Being Safe comments:

Great Program! Builds a positive bridge between local police and youth!
~Lieutenant Ryan D. Boehmke, Iron County Sheriff

Great Program, we see several kids on bikes in our campgrounds. This always seems to get the kids to put on helmets.
~Supervisor, Sean Mulligan, Holland State Park

Kids love the positive reinforcement for wearing a helmet
~Officer Leslie Darrow, Bay City Department of Public Safety

Support/Resource Groups

Spinal Cord Injury Resource Group
5:30 pm to 7:00 pm

3rd Tuesday of every-other month
January
March
May
July
September
November
contact: Mary Kunz
mary.kunz@ascension.org or 989-497-3075

Multiple Sclerosis Resource Center
6:30 pm to 7:30 pm

Monthly
2nd Tuesday of every month except July & August

contact: Heather Clark
heather.clark2@ascension.org or 989-497-3023

(both held at St. Mary's of Michigan Towne Centre conference room)

See www.fni.org for all calendar events, including Grand Rounds educational opportunities

Grants Received

FNI's ThinkFirst program received a grant from **Huntington Bank and Arnold & Gertrude Boutell Memorial Fund, CK Eddy Family Memorial Fund to support injury prevention and helmets for local schools.**

The **Saginaw Community Foundation Dow Chemical Company Foundation Community Donor-Advised Grant** also provided funds for helmets and community events in Saginaw County, targeting Carrolton, Hemlock, Stone and Zilwaukee elementary schools.

The **Saginaw Community Foundation Senior Enrichment Fund** provided funds to purchase new stroke screening machines and supplies to provide free community screenings.

Thank you!!!

Concussion Baselines

FNI began offering free concussion baseline assessments to area students and sports organizations last year. Since May of 2017, over 850 baselines have been completed with many more to be completed before the end of the year.

The assessment involves videogame-like physical activities including balance, speed, reaction-time among other measurements that not only cover cognitive function, but also performance. Concussion symptoms will be most apparent when activity is resumed and the TRAZER allows patients to gradually return to pre-injury performance and cognitive levels before Return to Play is issued. In addition, athletes are not able to "cheat" by answering questions incorrectly on purpose like other baseline programs.

The following area schools and organizations have gone above and beyond for their student athletes when it comes to concussion safety:

Arthur Hill High School
Saginaw High School
Thompson Middle School
Saginaw Arts and Sciences Academy
John Glenn High School
Delta College
Valley Lutheran
Caro High School
Merrill High School
New Lothrop
Reese High School
Birch Run High School
Trinity Monitor
Jr. Saginaw Spirit
Freeland Sports Zone HighSchool Football Combine



Driving Evaluation and Simulator

The Driver Rehab Program at St Mary's of Michigan Field Neurosciences Institute provides objective driving evaluations for people with disabilities or aging issues. Our goal is to embrace life by helping with the quality of an individual's life and increasing independence.



Who Could Benefit

Those individuals returning to driving after an illness or injury such as stroke, brain injury, amputation or neuromuscular conditions, such as MS, may benefit from this program. Senior citizens who have a decline in function, including changes in physical abilities, memory, and speed of processing, could also benefit.

What is included in the driving program

- A Pre-Driving Screening is a clinical assessment conducted at Field Neurosciences Institute and is used to determine if an individual has the skills needed to be a safe driver.
- An On-Road Evaluation is recommended following successful completion of the Pre-Driving Screening and is conducted by a Certified Driver Rehabilitation Specialist. We will refer you to an outside agency, who is partnering with us, or you an opt to go to another site in the state. This assessment is conducted in a vehicle equipped with a variety of adaptive controls to accommodate drivers with a variety of disabling conditions.
- A Driving Education component is included in all aspects of the driver rehab program including counseling, support and instruction in the use of a variety of adaptive equipment and community resources if return to safe driving may not be possible.

What is the Referral Process?

- A physician's prescription is required to participate in the program
- Valid driver's license or be eligible for a license with restrictions
- May be initiated by the driver, family member, MVA or other agencies
- Service not typically covered by Medicare or other insurance agencies

The Spirit of Crescent Industries award was awarded to Heather Clark from the Association of Rehabilitate Driving (ADED) to attend the 2018 ADED conference in Richmond, VA, August 12-14, 2018. Heather attended this conference and brought back the most current industry practices to FNI.

Contact Heather Clark at 989-497-3023 for more information or to schedule an evaluation.

This program was made possible by donations from the 2015 Field of Hope!

In Memoriam

Thomas W. Cline

10/17/1932 - 4/5/2018

Tom joined the FNI Board in June of 2011. He was a member of the Field of Hope fundraiser committee, offering his vast knowledge of the music industry in the selection of artists and providing video and photography of many of the events. He will be greatly missed by all of us, but has left a lasting legacy for which we are profoundly grateful.

Memorials given in Tom's name

Fred & Helen Brenner
Elizabeth Bueche-Schmidt
John & Myrna Cammin
Joseph & Barbara Day
Joe & Carol DeFrancesco
Gary & Deborah Dunbar
Dale & Mary Durham
Dr. E. Malcolm & Lois Field
Ernest Flegenheimer
Dorothy Foulds
Eugene Hamilton
Martha Ann Joseph
Patrick & Sue Kaltenbach
Sean & Sara Madigan
David & Sheri Mayer
Eugene & Yoko Mossner
Evelyn Mudd
Katherine Quелlette
John & Barbara Roberts
Gerald & Joan Talbot
Leslie Tincknell
Robert & Josephine Vitu
Sue Zazo



Tom with fellow Board member Margaret Clark

FNI Clinical Researcher accepted to elite Parkinson's Foundation nurse faculty program

The Parkinson's Foundation announced that Heather Clark, RN, research coordinator at St. Mary's of Michigan Field Neurosciences Institute, has been accepted to the distinguished Edmond J. Safra Visiting Nurse Faculty Program at the Parkinson's Foundation. This is a highly prestigious 40-hour accredited "train the trainer" program to improve Parkinson's Disease (PD) nursing care by training faculty leaders across the U.S. to educate nursing students. The rigorous course includes didactics, clinical time with patients, participation in a PD support group and the opportunity to develop an independent project.



Heather is one of just 35 accepted faculty in 2018 and will join the elite group of 228 alumni who have completed the intensive training over the last nine years. Parkinson's Foundation nurse scholars educate more than 20,000 nursing students on PD annually. With the number of people living with Parkinson's globally expected to double to nearly 13 million by 2040, teaching nursing students in the classroom is one of the best ways to prepare them for treating people with Parkinson's when they graduate. Heather traveled to the University of Toledo in May for the training.

In Memory of

Dr. Raana Akbar

Dr. E. Malcolm Field

William Allinder

Joan Allinder

Herbert Bach

Gwendolyn Bach

Charles Burda

Mary Burda
Thomas & Mary Bush
Mary Bykirk
Mary Feehan
John & Leslie Gordon
Benjamin & Barbara Gralla
Steve & Kathy Jezewski
Thomas & Barbara Melby
Dan & Betty Mostek
Deanna Murray
Van & Linda Schrock
Mary Sieggreen
Patric & Annette Stainsby
Greg & Ellen Thurlow
Celeste Zogas

Natalie Decker

Joan Allinder

Michael Dennis

Buchalter Family

Michael Eimers

Marian Hughes
Shiela Shevchenko
Joan Vacik
Richard & Marcia Wilson

Debbie Espha

Joan Allinder

Frank Field

Dr. E. Malcolm & Lois Field
Martha Ann Joseph
PMA Consultants
Robert LeFever
Robert & Gloria Sanders

Richard Grierbiehl

Otto & Colette Sonefeld

William Griffin

Joan Allinder

Antonio-Norita-Flor Hernandez

Gladys Zubulake

James Katter

Veda Nasser

Jim Keyes

Mary Judith Grzesiak

Dan Klimkiewicz

Linda Klimkiewicz

Barbara Krohn

John Bintz
D.J. Edelman Family Foundation
Ernest Flegenheimer
Martha Ann Joseph
Patricia LaBreck
Les Novitsky
Leslie O'Malley
Gayle Pearl
Mary Renninger
John & Barbara Roberts
Judy Rodriguez
Jeanne Schirmer

Dale Krueger

Mary Krueger

Richard Kulow

Kathryn Kulow

Don LeCureux

Ken & Jan LeCureux

Curt Lemcke

Avis, Brian & Melissa Leach
Bob Quackenbusch
Don & Suzanne Richard
Vern & Debbie Schiefer
Richard & Debra Whitting
Martin & Donna Wissmueller

Carolyn MacDonald

Martha Ann Joseph

Mary Machette

Kathryn Kulow

Mary Merchant

Answer Heating & Cooling, Inc.
Michael & Deborah Neilson
Rick Ford Sales
David & Lori Rowe

James E. O'Neill Jr.

Terence & Ethel O'Neill

Miles Purcell

Edwin & Suzanne Skrelunas

Carlene Rice

Richard Rice

Tom Ruckle

Mary Krueger

Sally Schiff

George & Jan Stewart

Maxey Spicer

Bierlein Companies Foundation

Patti Taylor

Clifford & Diane Rafter

Mary Jane Tezak

Mary Burns
David & Betty Nizinski
Henry & Bonnie Visser
George Wertman
George & Jan Stewart

Edna Wallace

Geraldine LeFevre

Andrew Williams

Robert & Gail Thomas

In Honor of

Dr. E. Malcolm Field

Chris Anagnost
Dana Panknin
John Riegle, Jr.

Louis J. Furlo

Ron & Mary Stelter
Frumeth Polasky

Martha Ann Joseph

Margaret Clark

Bapineedu Maganti, MD

E. Malcolm Field, MD

Dr. Samuel J. Shabeen

Dr. E. Malcolm Field

David Shultz

Joan Allinder
Phyllis George

PROTECTOR

A & D Home Health Care, Inc.
Absolute Building Maintenance
Dr. Joseph Adel & Dr. Zeina Habib Adel
Advanced Diagnostic Imaging, P.C.
Waheed Akbar M.D. &
Raana Akbar M.D., P.C.
Amendia, Inc.
Anonymous
Antique Warehouse & Speciality Shops
Arthur D. Eddy Charitable
Foundation
Arthur Webster Jr. Endowment Fund
Avalon & Tahoe Manufacturing, Inc
Dr. & Mrs. Edgar P. Balcueva
Charles F. and Adeline L.
Barth Charitable Foundation
Dr. Ronald & Dr. Sussan Bays
Bierlein Companies
Patricia F. Bierlein
Mr. & Mrs. Joseph C. Bommarito
Arnold & Gertrude Boutell
Memorial Fund
Mr. and Mrs. Marvin Brandle
Braun Kendrick Finkbeiner P.L.C.
Mr. & Mrs. Jerry L. Brown
Mr. & Mrs. John D. Bueker
Bueker Development Inc.
Mr. & Mrs. Carl Burk
Catholic Diocese of Saginaw
Catholic Federal Credit Union
Central Michigan University,
College of Medicine
Central Michigan University,
College of Humanities &
Social & Behavioral Sciences
Dr. & Mrs. Joseph W. Chatfield
Citizens Bank
C. K. Eddy Memorial Fund
Margaret E. Clark
Tom & Joanne Cline
Copoco Community Credit Union
Dr. & Mrs. Thomas E. Damuth
Davenport University
The Honorable & Mrs. Joseph
DeFrancesco
Dr. & Mrs. Delmer J. DeHart
Delphi Corporation
Dow Corning
Dr. Daniel Duffy
Dr. Gary Leo and Deborah Sue Dunbar
Mrs. Betty Dunbar
Duro-Last Roofing
D. J. Edelman Foundation
Mr. & Mrs. William J. Ewald
Dr. & Mrs. E. Malcolm Field
E. Malcolm & Lois Field Foundation
Mr. & Mrs. Frank E. Field
Mr. & Mrs. Irving A. Field
FirstMerit Bank

FNI Physical Medicine &
Rehabilitation, P.C.
Robert C. Folkert
Mr. & Mrs. Fred L. Fraizer, Jr.
Fraternal Order of Eagles Auxiliary
Mr. and Mrs. Louis J. Furlo
Dr. Adam E. Gamon
Garber Management Group
Garr Tool
Great Lakes Eye Institute
Mr. & Mrs. Eugene J. Hamilton
Mr. & Mrs. Louis E. Hanisko
Dr. & Mrs. Thomas J. Haverbush
Harvey Memorial Foundation
HealthPlus of Michigan
HealthSource Saginaw
Martha Ann Joseph
James & Sharon Kaylor
Mr. & Mrs. Richard D. Katz
Mr. & Mrs. Joseph P. Kelly
Mr. & Mrs. James E. Keyes
Mr. & Mrs. Michael Kremin, Jr.
Mr. Mrs. Dale A. Krueger
Lake Huron Credit Union
Mr. & Mrs. Thomas J. Lawler
Mr. & Mrs. Leonard H. LeFevre
Lighthouse Neurological
Rehabilitation Center
Ms. Barbara M. Mahar Lincoln
Little River Band of Ottawa Indians
Mr. & Mrs. Edward A. Lunt
Dr. & Mrs. Lakshmana R. Madala
Mail Room Service Center, Inc.
Mr. and Mrs. Joseph J. Majeski
Dr. Luigi & Dr. Carlotta Maresca
Mr. & Mrs. Henry G. Marsh
Angie Maziarz
The Honorable & Mrs. Gary R.
McDonald
McDonald Historic Auto Foundation
Mr. & Mrs. Thomas W. McDonald.
Mr. & Mrs. John W. McGraw
Medtronic Surgical Navigation
Merrill Lynch – The Iles Group
Michigan CardioVascular Institute
Michigan Orthopedic Services, L.L.C.
Midwestern Surgical Associates
Mobile Medical Response, Inc.
Morley Companies, Inc.
Morley Foundation
Dr. Joseph R. Moskal
New Hope Valley Assisted Living Home
Mr. & Mrs. David M. Nichols
Nichols Financial Group
Kevin D. Nichols
Dr. & Mrs. Jacob C. Ninan
O'Grady & O'Neil, P.C.
Pain Consultants of Michigan
Patricia B. Peplinski-Acker Family Trust
Pfizer Inc.

PNC Bank
Dr. & Mrs. Steven M. Pulver
Mr. & Mrs. Clifford Rafter
Dr. & Mrs. Ramesh P. Raju
Region V11 Area Agency On Aging
Rehabilitation Research Center
Riversbend Rehabilitation Inc.
John & Barbara Roberts
James L. Rogers
Saginaw Bay Underwriters
Saginaw Community Foundation
Saginaw Medical Federal Credit Union
Saginaw Radiotherapy
Saginaw Valley Neurosurgery, P.C.
Saginaw Valley State University
Dr. & Mrs. Naman Salibi
Dr. & Mrs. Gerald Schell
Mr. & Mrs. Raymond J. Schultz
Raymond J. and Monica E. Schultz Trust
Sebewaing Chamber of Commerce
Dr. & Mrs. Samuel H. Shaheen
Stan & Kevin Sobol
Sons of Italy Lodge 2456
Spineology, Inc.
Spence Brothers
St. Joseph Health System
St. Mary's of Michigan
Philip J. Stahle
Harold R. Stern
Superior Home Healthcare
Cecil & Helen Szepanski
Mr. & Mrs. Gerald J. Talbot
The Dow Chemical Company
The F. P. Horak Company
The Harold C. & Janet A.
Baldauf Foundation
The Manors LLC
The Rehmann Group
Mr. & Mrs. Bill Thomas
Timberline Emergency
Physicians, P.C.
Total Spine Midwest LLC
Tri-Star Trust Bank
Alice E. Turner Memorial Trust
Valley Anesthesia, P.C.
Valley Cardiology, P.C.
Mr. & Mrs. James M. VanTiffin
Dr. & Mrs. Robert L. Vitu
Mr. & Mrs. Patrick Walsh
Mr. & Mrs. Charles Weaver
Arthur Webster Jr. Endowment Fund
Leroy & Marcia Westrick
Jason & Carol White
Wickson-Link Memorial Foundation
Dr. & Mrs. David Wiersema
Dr. Susan Schmiede & Mr. Jim Wilson
Mr. & Mrs. John W. Wolf, Jr.
Dr. & Mrs. Michael J. Wolohan
Mr. Richard V. Wolohan
Wolohan Family Foundation

Wright & Filippis, Inc
Mr. & Mrs. Lloyd J. Yeo
Melvin & Hilda Zuelke
Charitable Foundation

PATRON

Abbott Neurology Care Center
Mr. & Mrs. Nate Abney
Accuray, Inc.
Agility Health Professionals, Inc.
Dr. & Mrs. Khurshid Ahmad
Mr. & Mrs. Patrick Allen
Valerie Allen
Mrs. Joan S. Allinder
Anagnost & Hall, P.C.
Andersen Eye Associates, L.L.P.
Anthony Filippis Co.
Dr. & Mrs. Joseph N. Aquilina
Mr. & Mrs. Brent D. Atwood
Dr. & Mrs. Umeshkumar A. Badami
Dr. & Mrs. Leroy C. Barry
Jean M. Bass
Dr. & Mrs. Reynold J. Baumstark
Bay Area Community Foundation
Learman Family Endowment Fund
Bay City Players
B. M. Benchley
Michael & Kathy Bierlein
Richard & Ann Blazejewski
Wallace & Irene Bronner
Family Charitable Foundation
Matt & Cheri Burk
Dr. Thomas C. Burk
Business Hemlock School Partnership
Cadwell Laboratories, Inc.
Dr. & Mrs. Donald J. Cady
Mr. & Mrs. Craig J. Carmichael
W. L. Case and Company
Cass City Public Schools
Mr. & Mrs. John A. Chasnis
Children's Neuropsychology Assoc.
C.M.W. Real Estate, Inc.
Dr. & Mrs. David J. Conrad
Consumers Energy
Mr. Peter Corcoran
Elena M. Cordoba
Cox, Hodgman & Giarmarco, P.C.
Hon. & Mrs. William A. Crane
Credit Services of Michigan, Inc.
DALMAC Fund
Tri County Bicycle Association
Laura Alice Day
Dr. Brian C. de Beaubien
Mr. & Mrs. Gerald L. Decker
Deisler Funeral Home
Delta College
Mr. Guy R. Demasellis
Daniel J. Dijak, Sr.
Alma Gilmore Doud
Mr. & Mrs. John F. Doyle

Marilyn A. Dust
East Central Michigan
Planning & Development Region
Eclipsys Corporation
Edgewood Village Mobile Home Park
Edwards Men's Shop
Dr. & Mrs. Thomas A. Egleston
Mr. Jeffrey Endean & Dr. Myrna Tumacher
Dr. & Mrs. Lamberto E. Eugenio
Mrs. Barbara Ewend
Falk Center for Molecular Therapeutics
Judith Farley
Miklos Ferber
Fifth Third Bank
James & Barbara Fisk
Mr. & Mrs. Ernest Flegenheimer
Mr. & Mrs. Mark S. Flegenheimer
Dr. & Mrs. Larry E. Fleischmann
Mr. & Mrs. J. Michael Fordney
Dr. & Mrs. Kenneth J. Forster
Dorothy D. Foulds
Dr. & Mrs. Rey A. Franco
Thomas L. Frank
Frankenmuth Insurance
Mr. Richard J. Garber, Jr.
Gardey Financial Advisors
Gardner, Provenzano,
Schauman & Thomas, P.C.
Glastender, Inc
Dr. & Mrs. Richard Goldner
Dr. Ravi Goyal & Dr. Rashmi Goyal
Gratiot Medical Center
Gray, Sowle & Iacco, P.C.
Grzesiak Rentals
Suhasini Gudipati, MD
Dr. & Mrs. Charles A. Guidot
Mr. & Mrs. James F. Hammis
Dr. & Mrs. Brian Hancock
Heartland Home Health Care
Mr. & Mrs. James Hensler
Dr. & Mrs. Verne D. Hulce
Mary Hughes
Huron Medical Center
J & B Products LTD
Aarol W. & Elaine M. Irish
Family Foundation
Mr. & Mrs. Thomas A. Jaffke
Mary K. James
Kelli Jankens
Jim Jasienski
Dr. & Mrs. James J. Jesko
Dr. & Mrs. Charles E. Jessup
Mr. & Mrs. Patrick R. Joslyn
Dr. & Mrs. Jose Mari G. Jurado
Jose Mari G. Jurado, M.D., P.C
Roger N. Kahn, M.D.
Karu Medical Associates
Dr. & Mrs. Kizhakepat P. Karunakaran
Dr. & Mrs. Young H. Kim
Drs. Nikolai & Lioudmila Kinachtchouk

J.E. Klobucar/J.D. Klobucher Foundation
Georgia L. Knapp
Dr. & Mrs. Charles Koenig
Dr. & Mrs. George H. Koepke
Mr. & Mrs. Zigmund A. Kozicki
Drs. Sam & Lakshmi Kottamasu
Kramer Realty Inc.
Chris Kreuger Memorial Golf Outing
Dr. Narendra R. Kumar
Lambert, Leser, Cook, Giunta
& Smith, P.C.
LandAmerica Lawyers Title
Mr. & Mrs. Kenneth W. LeCureux
Dr. James Letson, Jr.
Dr. Jeffrey Levin
Mr. & Mrs. Robert W. Loftus
Luce, Basil & Collins, Inc.
Mr. & Mrs. Jim Luth
Dr. & Mrs. William D. MacInnes
Dr. Amita A. Maganti &
Dr. Bapineedu Maganti
Khalid M. Malik, M.D
Dr. & Mrs. John W. Manning, III
Markey Maintenance Services, Inc.
Mr. & Mrs. Ronald Marquardt
Mr. and Mrs. Mark Maslovich
Mr. & Mrs. Terry E. Mast
Marlene J. Mauch
McDonald Ford
Mr. & Mrs. John McGill
Hon. & Mrs. Patrick McGraw
Lloyd J. McIntyre
Medtronic Sofamor Danek
Michigan Blood
Michigan Clinic Neurosurgery, PLLF
Midland Center for the Arts
MidMichigan Health
MidMichigan Medical Center Gladwin
Mid-Michigan Neurology
Mr. and Mrs. Kenneth R. Miller
Mrs. Lois Miller
Monitor Township Fire Department
Sylvia C. Moore
Katharyn M. Morley
Mt. Pleasant Area Community
Foundation
Drs. Thomas & Evelyn Mudd
Dr. & Mrs. Charles E. Mueller
Veta K. Nassar
Allen E. Nickless Memorial
Foundation
Jon & Jennifer Nichols
Mrs. Marilyn Nichols
Mr. & Mrs. Robert M. Nowak
Oakland Orthopedic
Dr. & Mrs. Dermot D. O'Brien
Katherine O'Brien
Mr. & Mrs. John F. O'Grady
Mr. and Mrs. Rick Ohle
Mr. & Mrs. Terence J. O'Neill

O'Neill, Wallace & Doyle, P.C.
Mr. & Mrs. Christopher J. Palazzolo
Dana D. Panknin
Paramount Rehabilitation Services, P.C.
Matthew Pavlovich
Shirley Patzwald & Dr. Tyler Haynes
Mary W. Princing
Mr. & Mrs. Giacomo Provenzano
Pumford Construction Inc.
Dr. Carlos Ramet
Dr. & Mrs. K. K. Ravindran
Mr. & Mrs. Jack J. Rehmann
Remer Plumbing, Heating &
Air Conditioning
Nijole Rice
Philip L. Richards
Mr. & Mrs. Clement J. Richter
Hiel and Mary Rockwell, Jr.
Rock Promotions
Rogers Realty
Ted Rogers
Mr. & Mrs. James E. Rozek
Dr. & Mrs. Frank Rugani
Saginaw Charter Township
Saginaw Intermediate School District
Sam's Club Foundation
Lewis F. Sandel, M.D
Sandusky Community Schools
Schall School PTO
George & Jeanne Lound Schaller
Susan Schmiede, M. D.
Dr. Caroline G. M. Scott
Brandon Sebald
Select Specialty Hospital
Seney Enterprise
Peter & Kari Shaheen
Dr. Shiraz H. Shariff
Dr. Deborah A. Shear
Dr. & Mrs. Farhad K. Shokoohi
Dr. & Mrs. Gerald A. Sieggreen
SignTec
Ed & Suzanne Skrelunas
Sovis Insurance Agency
Special Tree Head Injury Services
In memory of Thomas L. Spence
Spring Arbor University
Dr. Chandler W. Srinivasan
& Dr. Bala Srinivasan
St. Mary's Hospital School of
Nursing Alumnae Association
Patrick & Annette Stainsby
Martin H. Stark
Robert E. Stark & Martin H.
Stark Foundation Fund
State of Michigan
Stemco Kaiser
Stevens Van Lines, Inc.
Willam d. Strickler
Mr. & Mrs. Richard Stringer
Carol A. Stuhr

Sturtz & Sturtz, P.C.
Surgical Solutions
Kathleen M. Sutto
Swan Valley Country Club
Mr. and Mrs. John J. Swartz
Cecil & Helen Szepanski
Mr. & Mrs. Paul Tacey
G. Anthony Talbot
Mr. & Mrs. Mark Thompson
Dr. & Mrs. Dennis Tibble
Dr. & Mrs. George K. Tong
Tri Valley Landscaping Inc.
Tri-County Bicycle Association
Mr. & Mrs. Marvin Turner
Tyco Healthcare/US Surgical/Valley Lab
Lori Vandenboom
Janet Vennix
Venture Medical, Inc.
Verdoni Productions
Dr. Thomas J. Veverka
VPH Pharmacy
Mr. and Mrs. Christopher Walker
Wal-Mart Foundation
Wells Fargo Advisors Saginaw Office
Joan Wendland
Dr. Paul T. Werner
Margaret C. White
Mr. & Mrs. William Whitehead
Wildfire Credit Union
Tom Williamson
Wolgast Corporation
Dr. Edwin Wright
Fleury Yelvington &
Dr. Barry Solomon
Yeo Family Foundation
Pervez Yusaf, M.D.
Paul Zebrowski and Assoc.
Craig A. Zanut
Scott Zimostrad, PhD
and Associates

PEER

ADP
David M. Alexander
Allergan
Ambrose Squires Funeral Home
Roselyn Argyle
Paul & Rochelle Arnold
Dr. Walter C. Averill
Mr. & Mrs. Gary Barber
Nickolas Barris
Dr. & Mrs. Jack L. Barry
Mr. & Mrs. Thomas A. Basil
Dr. & Mrs. Norbert E. Baumgartner
Bay City Vascular
Bell-Wasik, Inc.
Bio-Logic Systems Corp.
Mr. & Mrs. Thomas Braley
Dr. & Mrs. Glen Brookshire
Dr. & Mrs. Gregory S. Brown

Dr. & Mrs. Jack R. Brown
Dr. & Mrs. Frederick J. Cady, Jr.
Dr. & Mrs. Douglas G. Campbell
Central Michigan Community Hospital
Central Michigan District Health
Chaklos, Jungerheld, Hahn &
Washburn, P.C.
Dr. & Mrs. James L. Chapman
Dr. & Mrs. Andrew Cohen
Dr. & Mrs. John F. Collins
Asa T. Compton
Crooked Creek Investment Company
Patrick Curtis
Chevrolet-Oldsmobile-Cadillac
Dr. & Mrs. Nikolay Dimitrov
Lawrence T. Doyle
Mr. & Mrs. James L. Duchaine
Dr. Jerry J. Evans
Farm Bureau Insurance –
Mr. Robert W. Pike
Burt & Linda Fettig
J. Michael Fordney, P.C.
Garb-Ko, Inc.
Martha D. Garber
Mr. & Mrs. Frederick C. Gardner
Pamela Gates
Mr. & Mrs. James S. Goetz
Stan Gorzinski
Dr. & Mrs. Rajiva Goyal
Mr. & Mrs. Delford Gronholz
Dr. Rao V. Gudipati
Guilford Pharmaceuticals
Mary K. Hach
Jacob C. Hanes
Mr. & Mrs. John Haywood
Helping Hands Nursing Services
Dr. Richard Heuschele
Hicks Studio of Saginaw & Midland
Hill-Rom
Dr. Ronald Hines
Holy Trinity Booster Club
Horizons Conference Center
Huron Medical Foundation
August Hurt
Dr. Thomas J. Hyde
Douglas Iles
Mr. & Mrs. Brjain d'Arcy James
Mr. & Mrs. William Jungerheld
Junior League of Saginaw Valley
Samer Kais, M.D.
Mr. & Mrs. Tim Kelly
Mr. Ernie Klee
Linda Klimkiewicz
Kohl's
Dr. & Mrs. Samuel Kurn
Kurtz Gravel Co
Medley A. Larkin, D.O.
Laser & Derm
Chester R. Latty
Mr. and Mrs. Bernard C. Letherer



4677 Towne Centre, Suite 101
Saginaw, MI 48604
989-497-3117 Phone
989-497-3119 Fax
www.fni.org

Michael A. Linn
Mr. & Mrs. Bob Lofiego
Steven J. Lutenski
Mr. & Mrs. Tim Mac Kay
Maday Leasing
Nathan McDonald
.Mr. & Mrs. Edwin Meyer
Mid-Michigan Surgical
Specialists, P.C.
Mid Michigan Vascular
Surgery, P.C.
Midwest Prostate &
Urological Institute
Mr. & Mrs. William Nason
Mr. & Mrs. Theodore L. Nelson
Mr. & Mrs. William Nichols
Lois Niethammer
Nortel
Dr. and Mrs. Frederick O'Dell
Mr. James E. O'Neill
Ms. Margaret R. O'Neill
Dr. Joseph Oesterling
Dr. Rustico B. Ortiz
Dr. & Mrs. Sunil P. Pandit
Mr. & Mrs. Stephen C. Papenfuss
Dr. & Mrs. Che Song Park
Marie Pierce
Primary Care Practice, P.C.
Princing & Ewend
Mr. & Mrs. Robert D. Pumford
Mr. & Mrs. Harry Putnam
Putnam Putnam & Assoc.
Leslie E. Raven
Dr. Surendra Raythath
RT Care, LLC
Richard D. Rice

RS Medical
S & C Holdings, LLC
Jacob Shinnors
Saginaw River Development
Saginaw Valley Bone &
Joint Center, P.C.
Dr. Raghu Sarvepalli
Senior Home Health Care, Inc.
Mr. & Mrs. Philip Serier
John M. Sheridan, D.D.S., P.C.
Shred Experts, LLC
Mr. & Mrs. Alfred D. Socha
Dr. & Mrs. Timothy E. Spencer
Standard Electric Company
Standish Community
Hospital Medical Staff
Mr. & Mrs. George Stewart
The Putnam Trust
Leslie D. Tyvela
Ultra Derm Systems
Mr. & Mrs. Bill Valler
Dr. John Vincent, Jr.
Mr. & Mrs. David A. Wallace
Walmart
E. Ann Walsh
Mr. & Mrs. Richard Watson
Mr. Gale L. Wickersham
Wilcox Professional Services
Wilkes Broadcasting, LLC MI
Dr. Terri L. Williams
Yeo & Yeo, P.C., CPAs &
Business Consultants
Mr. Eric Zimostrad @
Zimostrad & Zimostrad
Leslie E. Raven
Dr. Surendra Raythath

RT Care, LLC
Richard D. Rice
RS Medical
S & C Holdings, LLC
Jacob Shinnors
Saginaw River Development
Saginaw Valley Bone &
Joint Center, P.C.
Dr. Raghu Sarvepalli
Senior Home Health Care, Inc.
Mr. & Mrs. Philip Serier
John M. Sheridan, D.D.S., P.C.
Shred Experts, LLC
Mr. & Mrs. Alfred D. Socha
Dr. & Mrs. Timothy E. Spencer
Standard Electric Company
Standish Community
Hospital Medical Staff
Mr. & Mrs. George Stewart
The Putnam Trust
Leslie D. Tyvela
Ultra Derm Systems
Mr. & Mrs. Bill Valler
Dr. John Vincent, Jr.
Mr. & Mrs. David A. Wallace
Walmart
E. Ann Walsh
Mr. & Mrs. Richard Watson
Mr. Gale L. Wickersham
Wilcox Professional Services
Wilkes Broadcasting, LLC MI
Dr. Terri L. Williams
Yeo & Yeo, P.C., CPAs &
Business Consultants
Mr. Eric Zimostrad @
Zimostrad & Zimostrad

.....
If you would prefer to receive newsletters via email or be added or removed from FNI's mailing list, please let us know by emailing: cheri.burk@ascension.org or calling (989) 497-3118.

Newsletters are also available online at www.fni.org